

PILOT-OPERATED CHECK VALVE (HK3)



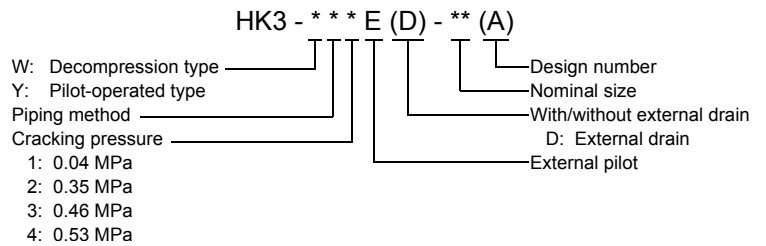
This type of valve usually functions as a normal check valve that allows fluid flow only in one direction by maintaining the specified cracking pressure and completely stops fluid flow in the reverse direction. However, it also enables fluid flow in the reverse direction on application of external pilot pressure.

- The pilot pressure has to be at least 40% of the OUT port pressure for both the pilot-operated type and the decompression type. The pilot-pressure needed for decompression is, however, 10% of the OUT port pressure or greater.
- If subplate SHQ**-*T*(A) and/or a flange is necessary, please order one separately.
- For gasket-connection type check valves, finish the mounting faces to the same quality as the valve faces (3.2 μmRz).

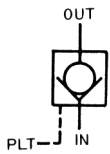
⚠ Cautions on Use

Please read the Instruction Manual carefully to ensure correct usage.

MODEL DESIGNATION

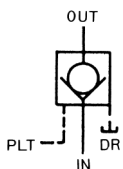


● Internal-drain Type Pilot-operated Check Valve



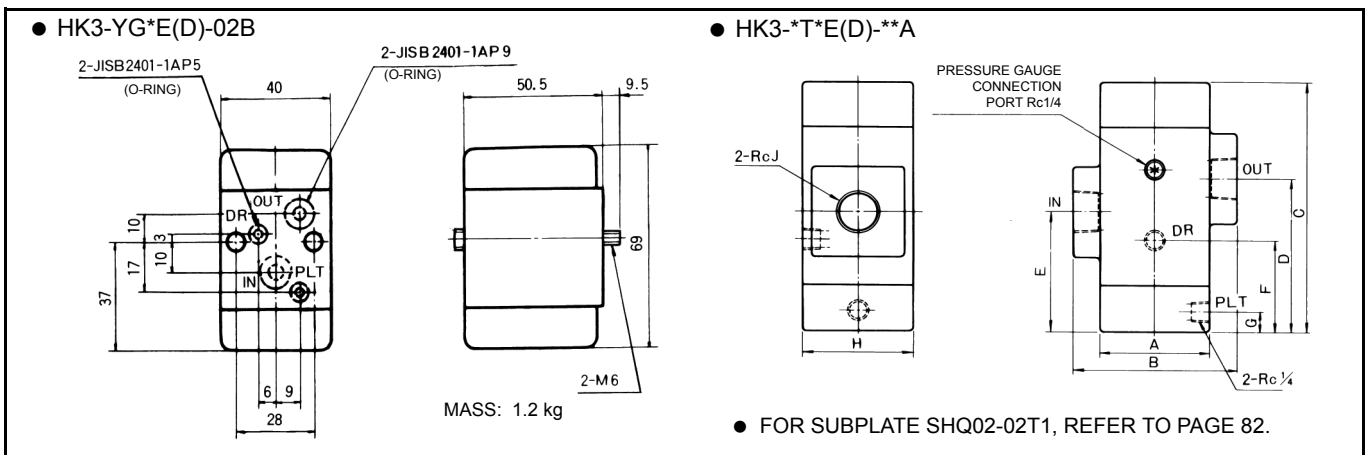
Nominal Size	Rated Flow (L/min)	Max. Operating Pressure (MPa)	Model		
			Thread-connection Type	Gasket-connection Type	Flange-connection Type
02	12	21		HK3-*G*E-02B	
03	40		HK3-*T*E-03A	HK3-*G*E-03A	HK3-YF*E-03A
04	75				HK3-YF*E-04A
06	120		HK3-*T*E-06A	HK3-*G*E-06A	HK3-YF*E-06A

● External-drain Type Pilot-operated Check Valve



Nominal Size	Rated Flow (L/min)	Max. Operating Pressure (MPa)	Model		
			Thread-connection Type	Gasket-connection Type	Flange-connection Type
40	0.040	21	HK3-*T*ED-03A	HK3-*G*ED-03A	
75	0.075				HK3-F*ED-04A
120	0.120		HK3-*T*ED-06A	HK3-*G*ED-06A	HK3-F*ED-06A

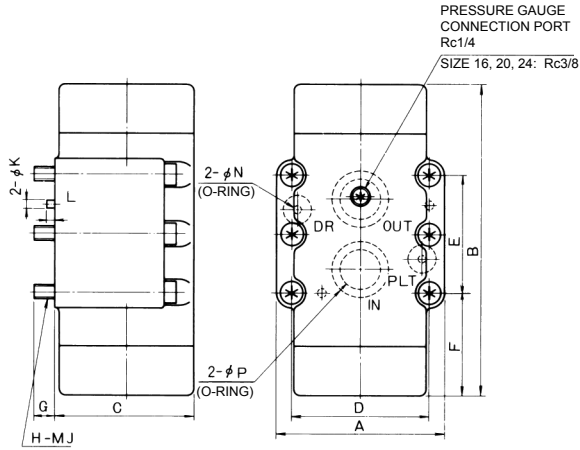
EXTERNAL DIMENSIONS



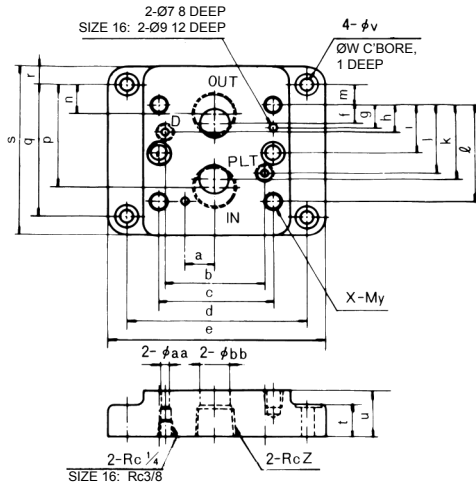
Model	A	B	C	D	E	F	G	H	J	Mass (kg)
HK3-*T*E(D)-03A	66	96	140	84	69	50	13	66	3/8	4
HK3-*T*E(D)-06A	72	108	165	101	79	60	14	72	3/4	5.5

EXTERNAL DIMENSIONS

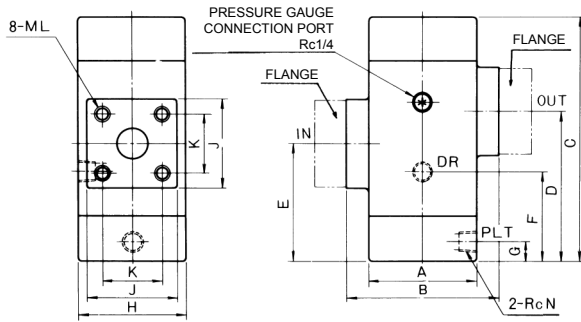
● HK3-*G*E(D)-**A



● SHQ**-*T1(A)



● HK3-*F*E(D)-**A



NOTE: DR IS NECESSARY ONLY FOR EXTERNAL DRAIN TYPE (HK3-Y**ED-**A). FOR SUBPLATE SHQ**-*T3, REFER TO PAGE 305.

Model	A	B	C	D	E	F	G	H	J	K	L	N	P	Mass (kg)
HK3-*G*E(D)-03A	88	117	65	66.7	42.9	40	15	4	10	6	6	JISB2401-1AP11	JISB2401-1AP21	4
HK3-*G*E(D)-06A	102	165	75	79.4	60.3	56	15	4	10	6	6	JISB2401-1AP16	JISB2401-1AG30	7

NOTE: With HK3-YG*E(D)-20A / 24A, the pilot is taken from the lower lid.

Model	a	b	c	d	e	f	g	h	i	j	k	ℓ	m	n	p	q	r	s	t	u	v	w	x	y	z	aa	bb
SHQ03-03T1	19	51	67	106.4	130	7	11	21.5	—	21.5	36	43	0	5	38	43	11	65	11	25	11	17.5	4	10	3/8	5	14.5
SHQ03-04T1	19	51	67	106.4	130	7	11	21.5	—	21.5	36	43	4.5	7	45	52	11	74	11	30	11	17.5	4	10	1/2	5	14.5
SHQ06-06T1	24	68	80	124	146	11	16	21	—	39	49	60	0	6	54	60	18	96	11	35	11	17.5	4	10	3/4	6	19
SHQ06-08T1	24	68	80	124	146	11	16	21	—	39	49	60	6	7	65	72	18	108	11	43	11	17.5	4	10	1	5	19

Model	A	B	C	D	E	F	G	H	J	K	L	N	Used Flange	Mass (kg)
HK3-*F*E(D)-04A	66	90	140	84	69	50	13	66	56	36	10	1/4	JISB2291-SSA15	4.5
HK3-*F*E(D)-06A	72	102	165	101	79	60	13	72	60	40	10	1/4	JISB2291-SSA20	6